

REGENTS HIGH SCHOOL EXAMINATION

LIVING ENVIRONMENT

Friday, January 24, 2025 — 9:15 a.m. to 12:15 p.m., only

Student Name _____

School Name _____

The possession or use of any communications device is strictly prohibited when taking this examination. If you have or use any communications device, no matter how briefly, your examination will be invalidated and no score will be calculated for you.

Print your name and the name of your school on the lines above.

A separate answer sheet for multiple-choice questions in Parts A, B-1, B-2, and D has been provided to you. Follow the instructions from the proctor for completing the student information on your answer sheet.

You are to answer all questions in all parts of this examination. Record your answers for all multiple-choice questions, including those in Parts B-2 and D, on the separate answer sheet. Record your answers for all open-ended questions directly in this examination booklet. All answers in this examination booklet should be written in pen, except for graphs and drawings, which should be done in pencil. You may use scrap paper to work out the answers to the questions, but be sure to record all your answers on the answer sheet or in this examination booklet as directed.

When you have completed the examination, you must sign the declaration printed on your separate answer sheet, indicating that you had no unlawful knowledge of the questions or answers prior to the examination and that you have neither given nor received assistance in answering any of the questions during the examination. Your answer sheet cannot be accepted if you fail to sign this declaration.

Notice ...

A four-function or scientific calculator must be available for you to use while taking this examination.

DO NOT START THIS EXAMINATION UNTIL THE SIGNAL IS GIVEN.

Part A

Answer all questions in this part. [30]

Directions (1–30): For *each* statement or question, record on the separate answer sheet the *number* of the word or expression that, of those given, best completes the statement or answers the question.

1 When you cut your finger, new skin quickly grows that repairs and replaces the damaged skin cells. Information directing this process is located in the

- (1) mitochondria in neighboring skin cells, which provide the energy needed for mitotic cell division
- (2) mitochondria in neighboring skin cells, which provide the energy needed for meiotic cell division
- (3) DNA of neighboring cells, which divide by mitotic cell division
- (4) DNA of neighboring cells, which divide by meiotic cell division

2 ATP is produced in the

- (1) vacuoles
- (2) nuclei
- (3) mitochondria
- (4) ribosomes

3 Some trees release toxins into the soil that can kill the plants nearby. This ability can best be described as

- (1) a means of establishing a consistent soil pH
- (2) a benefit to the ecosystem, since it results in increased biodiversity
- (3) a trait acquired by the species to eliminate the consumers that feed on them
- (4) an evolutionary advantage, reducing competition for water, nutrients, and sunlight

4 When the frequency of a gene in a population changes, the most likely result would be

- (1) ecological succession
- (2) biological evolution
- (3) species extinction
- (4) genetic mutation

5 During the 1880s, in an attempt to control the rat population, the Asian mongoose was brought to the Hawaiian Islands. However, there was a flaw in the plan. Rats are active at night, while mongooses feed on birds and eggs during the day. They had little effect on the rat population. The mongoose population rapidly increased and caused the extinction of many bird species native to the islands.

Bringing mongooses to the Hawaiian Islands is an example of

- (1) a technological fix to solve problems caused by population growth
- (2) developing a research plan to study unintended outcomes
- (3) humans altering ecosystems, resulting in unintended consequences
- (4) an imported species solving an ecological problem

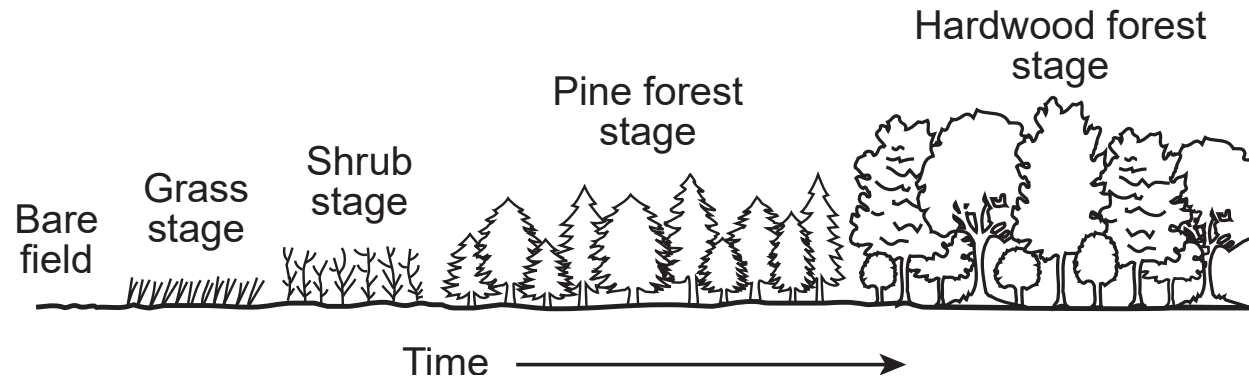
6 Many companies today are looking for ways to reduce the use of finite resources. They are working to recycle, reuse, and repair more products to reduce dumping and pollution. Which statement best describes a positive result of these changes?

- (1) Fossil fuels will be renewed for future generations to utilize.
- (2) Finite resources will not be depleted as quickly.
- (3) These activities can result in unstable ecosystems.
- (4) Destruction of ecosystems will result in a loss of biodiversity.

7 Which characteristic would give one species the greatest advantage over other species?

- (1) higher number of surviving offspring
- (2) lower number of matings
- (3) lower adaptation to the environment
- (4) higher rate of disease

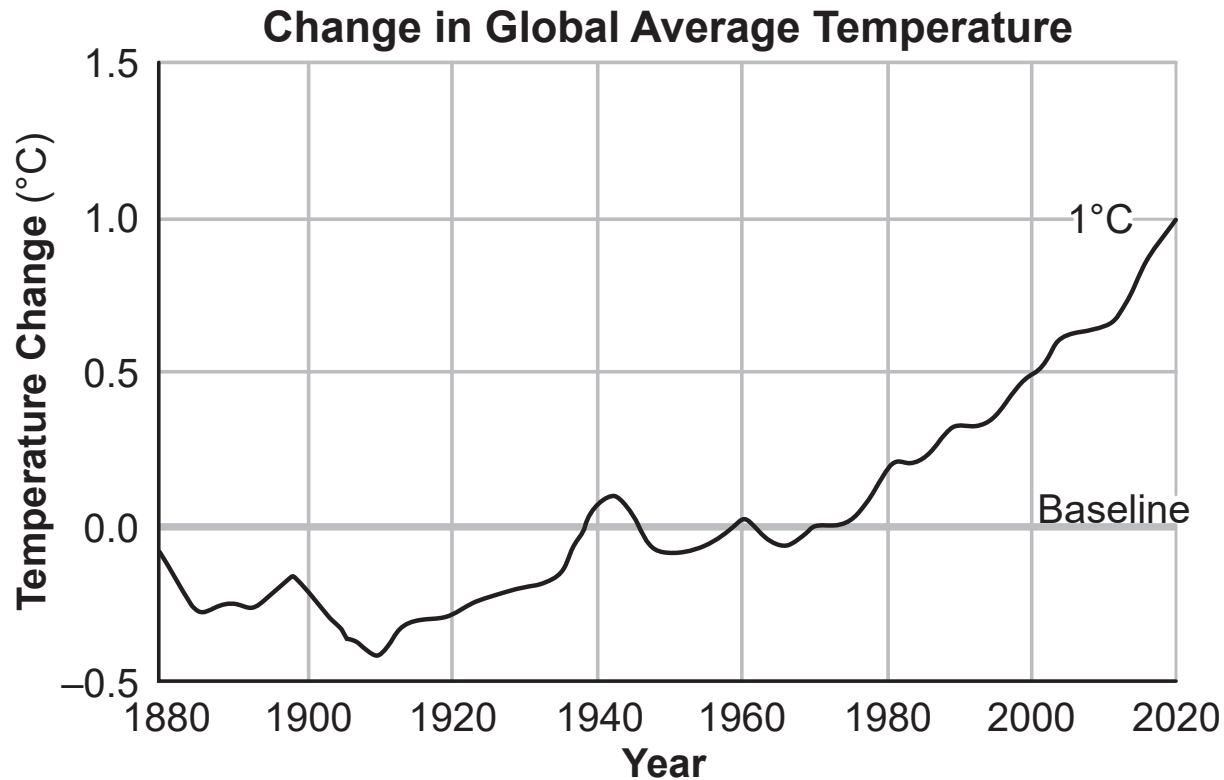
8 The diagram below represents the same location over a period of many years.



As a result of these changes,

- (1) biodiversity in the area decreases
- (2) the community becomes more stable
- (3) the community becomes less stable
- (4) biodiversity is not affected

9 Between 1880 and 2020, Earth's temperature increased slightly more than 1°C.



The best explanation for this increase is

- (1) a decrease in the amount of sunlight reaching Earth each year
- (2) an increase in the amount of solar radiation reflected back into space
- (3) changing concentrations of gases in the atmosphere
- (4) volcanic activity releasing ash and dust into the atmosphere

10 Two different species of animal prefer the same plant for food. One eats the leaves of the plant, the other prefers the fruit. By eating different parts of the same plant these species can successfully coexist because they do not

- | | |
|-----------------------------------|--|
| (1) compete for limited resources | (3) reproduce at the same time of year |
| (2) live in the same area | (4) interact in a predator-prey relationship |

11 Different techniques are used to study cells. Fluorescent (glowing) tags allow scientists to visualize specific proteins as they are synthesized inside cells. Which part of a cell would be studied when using this technology to visualize protein synthesis?

- (1) nucleus
- (2) ribosome
- (3) cell wall
- (4) cell membrane

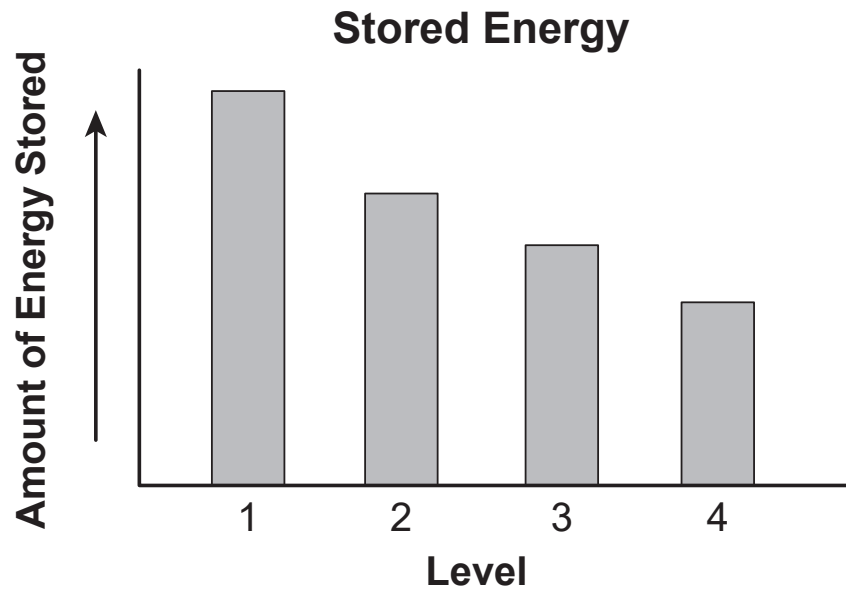
12 The image below shows a recently discovered fossil of an unhatched egg of a theropod dinosaur. The dinosaur is in a prehatching position similar to bird embryos in unhatched eggs today. Prior to finding the fossil, this behavior was never seen in animals other than birds.



The fact that both theropod dinosaurs and birds share this behavior is evidence that

- (1) birds and theropod dinosaurs are related and share a common ancestor
- (2) animals that develop in eggs must use this behavior to survive
- (3) this behavior decreases reproductive success
- (4) behaviors like this must be learned from parents

- 13 The graph below represents the amount of stored energy in each level of an energy pyramid.



The amount of stored energy between level 1 and level 4 *decreases* because

- (1) there are more organisms at level 4
- (2) level 1 has more consumers
- (3) at each level some energy is released as heat
- (4) there are more producers at each level

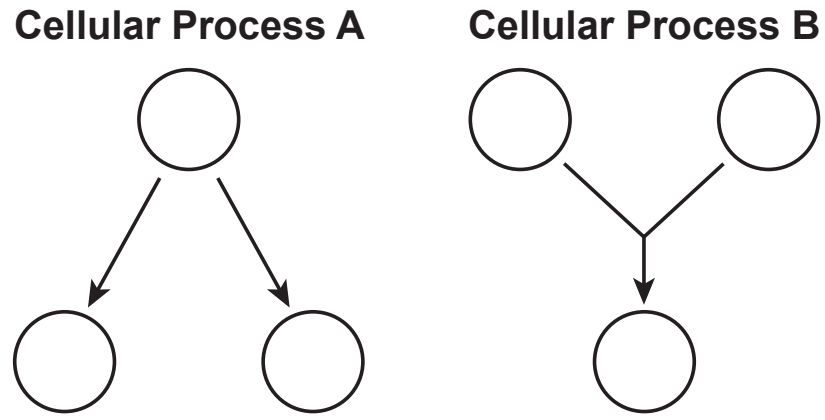
- 14 In a sexually reproducing species of plant, which change could occur that would have an effect on the species in the future?

- (1) changes in the egg cells in the ovaries of the plants' flowers
- (2) variations that occur in the root cells of the plants in a field
- (3) differences in leaf cells that are exposed to solar radiation
- (4) a change in the DNA sequence caused by ultraviolet radiation in the cells of the plants' stems

- 15 Many factors go into producing goods that are used by people in their everyday lives. In manufacturing, the production of goods and use of energy

- (1) is always positive because it is the only way for goods to be produced
- (2) can only be negative because it generates a lot of pollution
- (3) is neither positive nor negative because the energy is necessary
- (4) can have both positive and negative effects

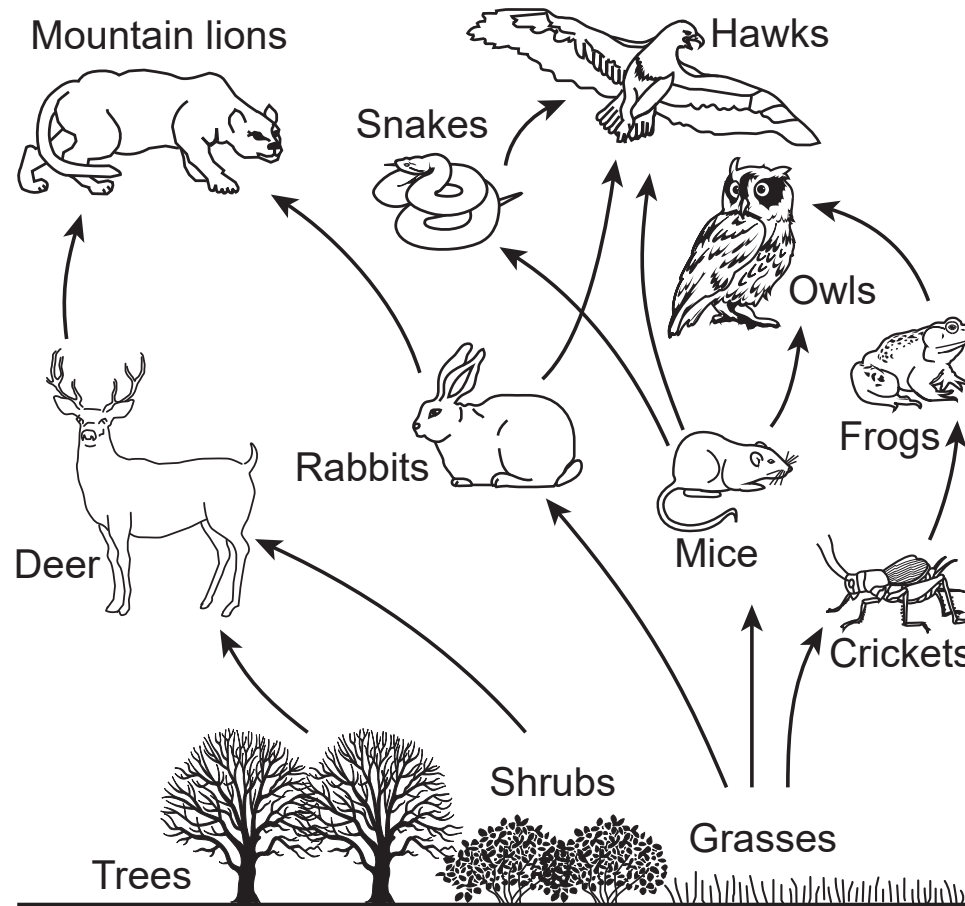
16 The illustration below represents two cellular processes, *A* and *B*.



Select the row in the table that correctly identifies the cellular process.

Row	Cellular Process A	Cellular Process B
(1)	meiosis	differentiation
(2)	recombination	cloning
(3)	fertilization	recombination
(4)	mitosis	fertilization

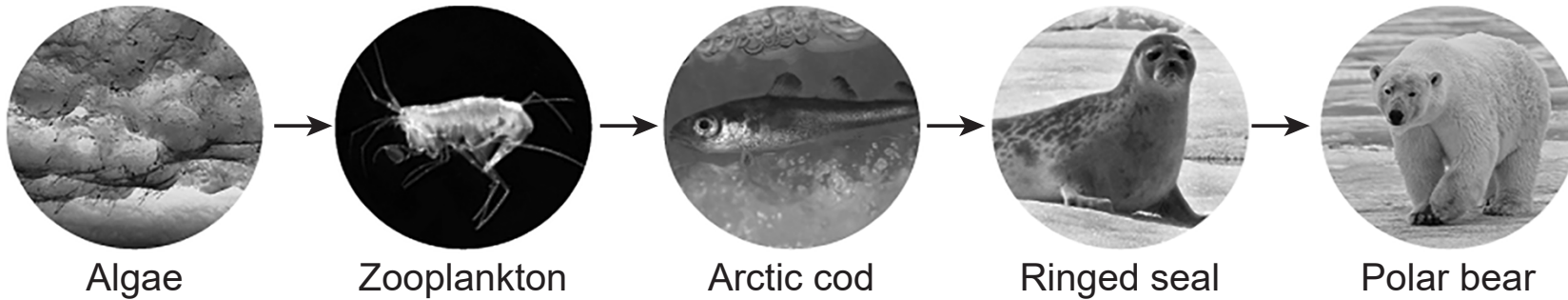
17 A food web is represented below.



A chemical was introduced into this environment that caused a decrease in the population of mice. This would most likely cause

- (1) an increase in the deer population
- (2) an increase in the shrub population
- (3) a decrease in the tree population
- (4) a decrease in the snake population

18 Populations of organisms making up an Arctic food chain are represented below.



Which statement concerning this food chain is the most accurate?

- (1) The greatest amount of energy in this food chain is located in the polar bear population.
- (2) Zooplankton, which provide food for the cod, are the main producers in this chain.
- (3) A reduction in the algae populations would most likely affect the survival of all the other populations in this food chain.
- (4) The organisms in this chain can all produce their own energy during long periods of cold weather.

19 The protein in a hamburger is broken down into amino acids. Which two processes are involved in the breakdown of the protein and the absorption of the amino acids into the bloodstream?

- | | |
|-----------------------------|--------------------------------------|
| (1) synthesis and mitosis | (3) mitosis and digestion |
| (2) digestion and diffusion | (4) active transport and replication |

20 Tuatara are the last survivors of an ancient group of reptiles that lived at the same time as the dinosaurs. Tuatara contain a very large genome. The genome, its complete set of genes, is about two-thirds bigger than the human genome.



One possible explanation for why the tuatara has survived since prehistoric times is that their large genome

- (1) has enabled them to live on a part of Earth that has not gone through any environmental changes since the time of the dinosaurs
- (2) provided the members of the species with characteristics that gave them advantages for survival in changing environments
- (3) can mutate when the species needs to develop characteristics that will adapt the members to live in areas that are very cold or very warm
- (4) can rearrange genes so that the species evolves when environmental changes occur

21 *Two* primary chemical messengers used in communication within the human body include

- (1) antibodies and pathogens
- (2) organic catalysts and toxins
- (3) enzymes and antigens produced by body cells
- (4) hormones and chemicals produced by nerve cells

22 Holstein cows have become the most widespread breed of dairy cow in the United States. They have been selectively bred to have many characteristics beneficial to dairy farmers. Holsteins are known for their ability to produce large quantities of milk. In addition, they are often calm and agreeable animals.



Which statement best describes a potential risk of the selective breeding process to future generations of Holstein dairy cows?

- (1) Genetic diversity in the breed may become limited over time.
- (2) It increases the chances of having even more desired characteristics.
- (3) It results in many highly productive and long-lived animals.
- (4) It improves the health of future generations of Holstein cattle.

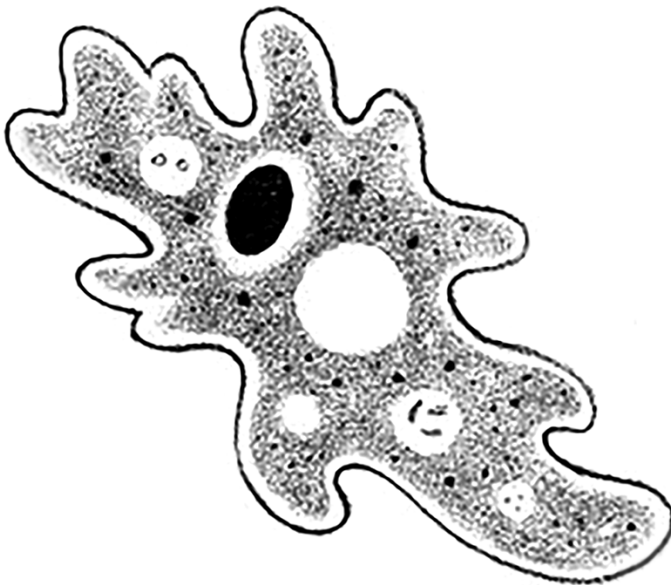
23 An organism that normally has 32 chromosomes in its body cells is found to be producing gametes with either 15 or 17 chromosomes. It has not been able to successfully reproduce. The most likely reason for its inability to reproduce would be errors during the process of

- | | |
|---------------------|-------------|
| (1) mitosis | (3) meiosis |
| (2) differentiation | (4) cloning |

24 Which sequence correctly identifies the flow of energy through an ecosystem?

- (1) producers → consumer → herbivore
- (2) consumer → decomposer → producer
- (3) carnivore → herbivore → producer
- (4) producer → consumer → decomposer

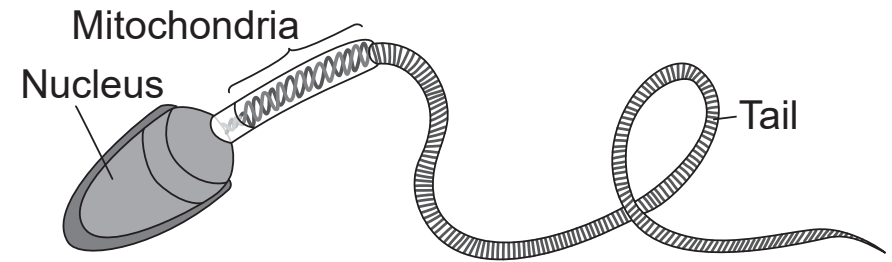
25 An ameba, which is a single-celled aquatic organism, is represented below.



Which of the ameba's cell structures is the most important in obtaining oxygen from its environment?

- (1) cell membrane
- (2) ribosome
- (3) mitochondrion
- (4) cell wall

26 The diagram below represents a specialized gamete that plays a role in human reproduction.



The proper functioning of cells like these is vital for human reproduction because

- (1) its mitochondria provide the nutrition to support the embryo
- (2) the tail makes it possible to deliver all the genetic information needed in a zygote
- (3) the cell differentiates to form specialized structures such as tissues and organs
- (4) its nucleus carries half the genetic information needed to form a zygote

27 If the amounts of carbon dioxide and water available increase, it is most likely that the first response by the producer organisms would be to

- (1) increase glucose synthesis
- (2) increase DNA synthesis
- (3) decrease amino acid synthesis
- (4) decrease nucleic acid synthesis

28 There are high numbers of stray and feral cats in communities across the United States. In order to humanely control these cat populations, many areas are participating in programs to trap, spay, and release the animals. When a female cat is spayed, organs are surgically removed to prevent the animal from being able to reproduce. Which *two* organs are most likely removed from the female cat during this surgery?

- (1) uterus and placenta
- (2) ovaries and uterus
- (3) ovaries and stomach
- (4) placenta and testes

29 When you purchase a fishing license in New York State, you are told to check the *Advisory Tables* before consuming any of the fish you catch. The tables list the fish species you should not eat and others you can eat up to four times per month, due to the presence of toxic chemicals in the fish.

A likely reason the table recommends that children under the age of 15 and young women should *not* eat any of the fish caught in some bodies of water is that

- (1) young women and children already have a large amount of these chemicals in their bodies
- (2) the chemicals may affect their development or harm potential unborn children
- (3) the chemicals do not affect males, so they can eat up to four of the fish per month
- (4) the fish species on the list are in danger of extinction

30 Examples of two abiotic resources present in an ecosystem are

- (1) nitrogen and carbon dioxide in the atmosphere
- (2) animal species and water
- (3) the plant species and soil minerals
- (4) populations of decomposers and pH of the soil

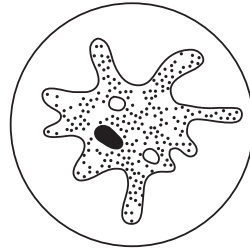
Part B-1

Answer all questions in this part. [13]

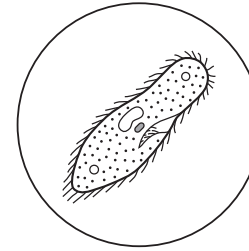
Directions (31–43): For *each* statement or question, record on the separate answer sheet the *number* of the word or expression that, of those given, best completes the statement or answers the question.

- 31 Organisms *A* and *B* represent microorganisms viewed through a microscope. Although both seem to occupy the same field of view, which organism is actually larger?

Organism A
viewed with 10x objective

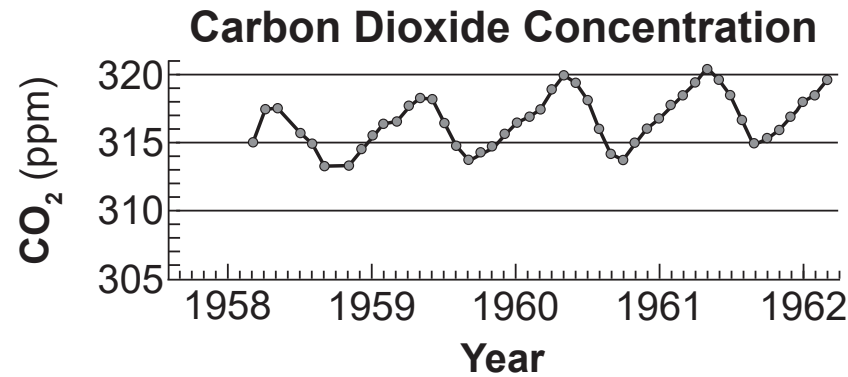


Organism B
viewed with 40x objective



- (1) *A* is larger since it fills the field of view at low magnification.
- (2) *B* is larger since the magnification is lower.
- (3) *A* is larger since the magnification is higher.
- (4) *B* is larger since it fills the field of view at high magnification.

32 The data represented in the graph below show differences in the concentration of carbon dioxide (CO₂) in the atmosphere during the summer and winter months.



Which statement best explains why these differences occur?

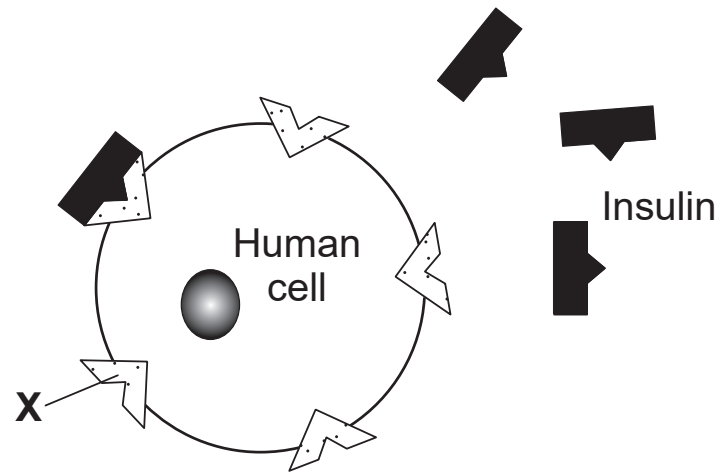
- (1) The rate of respiration in plants increases during the summer, releasing more CO₂ into the atmosphere.
- (2) The activity of decomposers increases during the winter months, removing large amounts of CO₂ from the atmosphere.
- (3) The increased exposure of plants to sunlight during the winter results in increased CO₂ production.
- (4) The activity of autotrophs increases during the summer, removing CO₂ from the atmosphere.

33 Altering the DNA of a muscle cell in a mouse by substituting one base pair with another could likely

- (1) change all the DNA sequences in the mouse
- (2) change one amino acid in a protein a muscle cell produces
- (3) alter the carbohydrates that the muscle cells' ribosomes produce
- (4) alter the DNA of the offspring of the mouse

Base your answers to questions 34 and 35 on the diagram and information below and on your knowledge of biology.

34 The diagram below represents the interaction of a human cell and the hormone, insulin, that maintains a healthy blood glucose level in the body.



Structure X is best described as a

- (1) signal molecule that is attached to the cell wall
 - (2) protein molecule that releases energy that can be used by the cell
 - (3) carbohydrate molecule that sends signals to other cells
 - (4) receptor molecule that allows the cell to respond to changes
- 35 Some individuals cannot produce insulin. As a result, their cells will
- (1) produce another molecule to take over the function of insulin
 - (2) synthesize more glucose for energy production
 - (3) not respond appropriately to changes in blood glucose levels
 - (4) divide at a faster rate than when insulin is available

36 Two different human disorders are compared in the table below.

Blood Disorder That Affects Hemoglobin	Skin Disorder With a Sore That Does Not Heal
<ul style="list-style-type: none">• caused by a gene mutation• individuals with two copies of the mutated gene have the disorder• this disorder is more common in some populations than in others• individuals are born with this disorder	<ul style="list-style-type: none">• caused by a gene mutation• some individuals exposed to UV radiation develop the disorder• there are environmental factors associated with the disorder• abnormal skin cells reproduce rapidly in exposed individual

Which statement describes the patterns of inheritance for these two disorders?

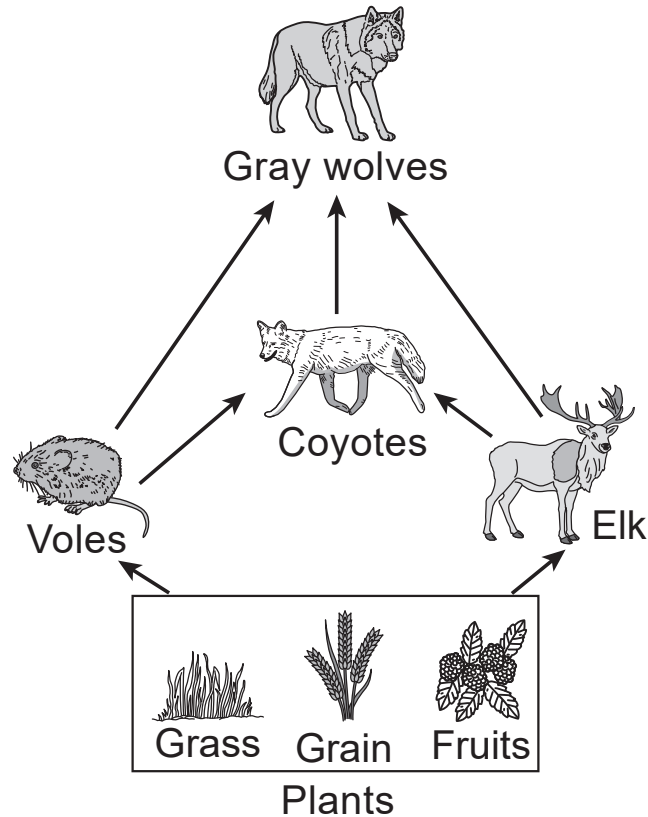
- (1) The blood disorder is not inherited but the skin disorder is inherited.
- (2) Both the blood and skin disorders are not inherited but can be passed to offspring.
- (3) The blood disorder can be inherited, and there are factors associated with the skin disorder that may be inherited.
- (4) Both the blood and skin disorders can be inherited, with offspring always showing symptoms associated with the disorders.

GO RIGHT ON TO THE NEXT PAGE ⇨

Base your answers to questions 37 and 38 on the diagram and information below and on your knowledge of biology.

Gray wolves have been identified as a keystone species, which is a species that is critical to the health of the Yellowstone ecosystem.

Food Web in the Yellowstone Ecosystem



- 37 The ecosystem will be disrupted with the loss of this keystone species because the loss would lead to
- (1) a decrease in the elk population
 - (2) a decrease in the coyote population
 - (3) an increase in the plant populations
 - (4) a decrease in the plant populations

38 Due to human concerns, wolves were removed from the Yellowstone ecosystem for approximately 70 years, from the 1920s until 1995. Scientists felt that, as a keystone species, it was important to reintroduce the wolves to

- (1) increase the stability of the natural environment
 - (2) limit the use of pesticides to control plant populations
 - (3) increase the reproductive rate of the elk population
 - (4) stimulate growth of the coyote population
-

39 Hydrangeas are plants with flowers that can change color. If the pH of the soil in which the plants are growing is altered, the flower color can vary from pink to blue. What is the best explanation for this phenomenon?

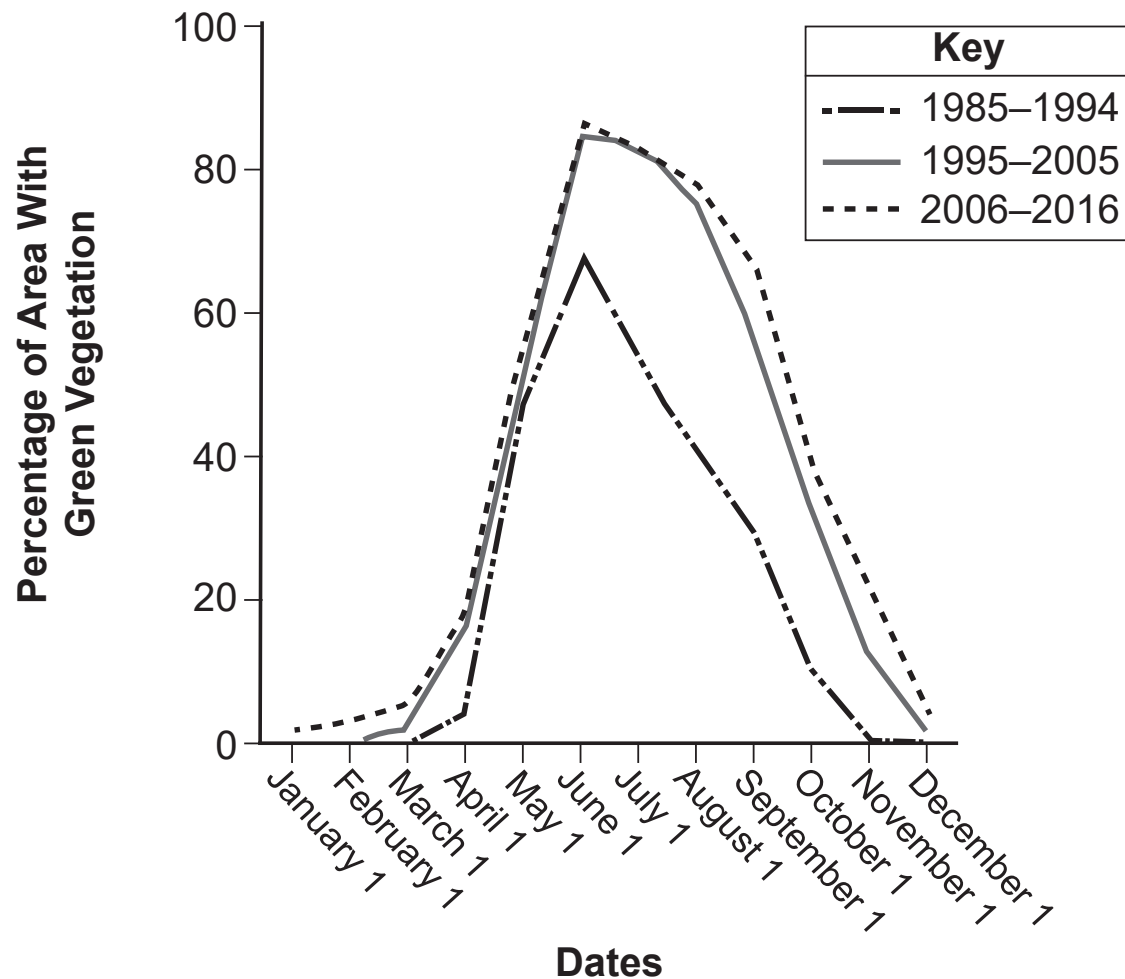
- (1) The genes of the hydrangea plants are mutated by the change in pH.
- (2) Some of the genes of the hydrangea plants die off due to the pH change.
- (3) The genes of the hydrangea plants can be turned on and off by different soil pH levels.
- (4) The genes of the hydrangea plant change chromosomes with different soil pH levels.

Base your answers to questions 40 and 41 on the information below and on your knowledge of biology.

In the 1990s, ranchers on Maggie Creek in Nevada moved the areas where their cattle were grazing. The move was done to help vegetation regrow on the banks of the creek, which had been eroding due to lack of vegetation.

After the move, vegetation began to return to the creek banks. The graph below shows the changes in the amount of green vegetation from 1985 to 2016.

Effect of Restoration at Maggie Creek, Nevada



40 How many more months did the Maggie Creek area have some green vegetation cover in 2006-2016, compared with the number of months of green cover in 1985-1994?

(1) 5 months

(3) 3 months

(2) 7 months

(4) 10 months

41 The change in the environmental conditions of Maggie Creek over time is an example of how

(1) human actions in one state can cause an ecosystem to develop into a stable grassland community in another state

(2) grazing animals will eventually have a positive environmental effect on the land where they are kept

(3) changing agricultural practices can help to restore environmental stability to certain locations

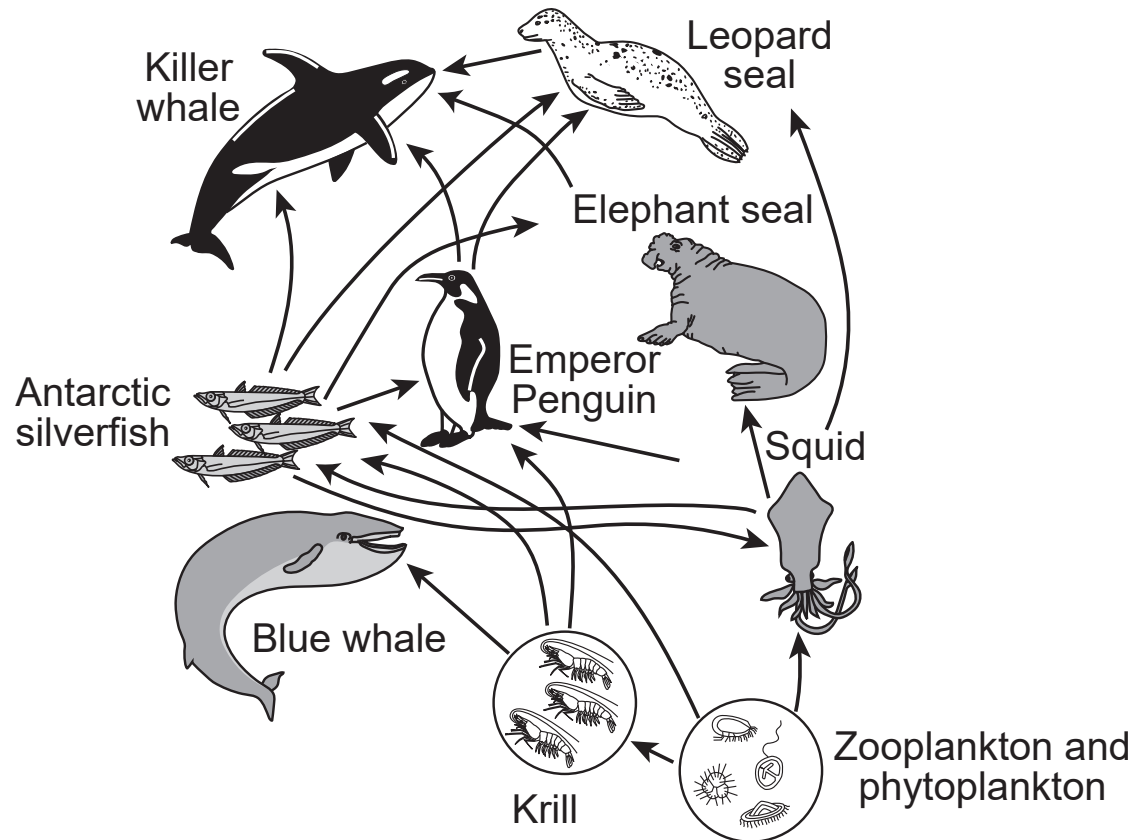
(4) once humans interfere with environmental factors, stability cannot be restored in an ecosystem

Base your answer to question 42 on the information below and on your knowledge of biology.

PCBs in the Environment

PCBs are chemicals once used in electrical equipment. Their use has now been banned because PCBs have been found to cause cancer. These harmful chemicals made their way into the ocean and have accumulated in the tissues of organisms. Beginning with the producers, the levels of PCBs become more concentrated as larger organisms eat smaller ones. It has been shown that organisms higher in the food chain contain the greatest levels of PCBs.

A student examined the diagram below of an Antarctic food web and made the claim that the greatest concentration of PCBs would be found in leopard seals.



42 Based on information provided in the Antarctic food web, *one* reason blue whales may contain a lower concentration of PCBs than killer whales is that blue whales

- (1) eat krill, which have a lower accumulation of PCBs than penguins and elephant seals
 - (2) eat only plants that contain PCBs
 - (3) are eaten by killer whales that accumulate PCBs from blue whales and other species
 - (4) do not live as long as killer whales, and therefore their PCB concentration is lower
-

43 *C. explodens*, a species of ant that resides in the tropical jungles of Borneo, can explode when their nest is threatened. The nests contain adult ants, eggs, and larvae. When an adult ant comes in contact with an enemy ant, the *C. explodens* ant latches onto it and squeezes its own abdominal muscles until its abdomen bursts open, releasing a toxic goo.

Which statement best describes this phenomenon?

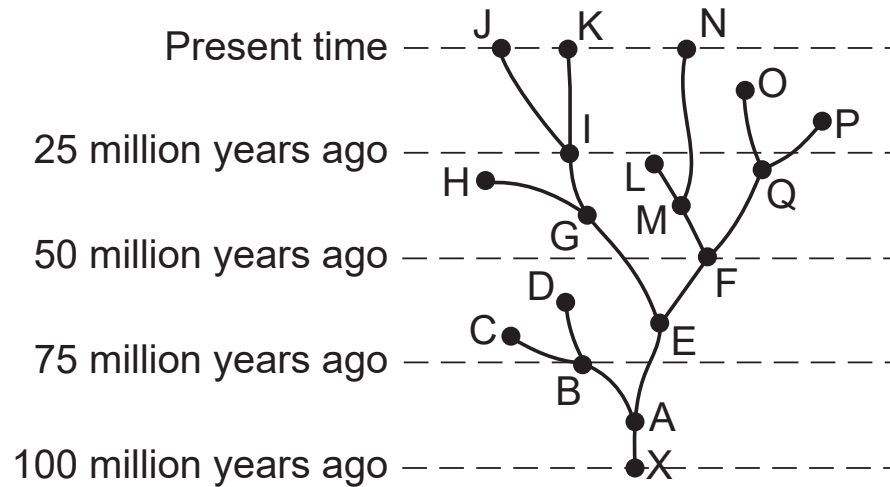
- (1) The ants needed a way to protect their offspring, so they developed a way to release a toxic goo to kill enemies.
 - (2) This behavior has resulted in greater reproductive success of the ants, since it kills the enemies who would have fed on their offspring.
 - (3) The offspring of the ants will not inherit the exploding abdomen trait because this trait is not genetic.
 - (4) The ant species will likely become extinct, since most of them die while protecting the nest.
-

Part B-2

Answer all questions in this part. [12]

Directions (44–55): For those questions that are multiple choice, record on the separate answer sheet the *number* of the choice that, of those given, best completes each statement or answers each question. For all other questions in this part, follow the directions given and record your answers in the spaces provided in this examination booklet.

Base your answer to question 44 on the diagram below and on your knowledge of biology. The diagram represents an evolutionary pathway for certain organisms over many years.



44 Identify the organism in the diagram that became extinct about 60 million years ago. [1]

GO RIGHT ON TO THE NEXT PAGE ⇨

Base your answers to questions 45 through 48 on the information below, on the next page, and on your knowledge of biology.

The Common Loon

Loons are aquatic birds found on freshwater lakes throughout Canada and the northern part of the United States from early spring through fall. They inhabit lakes over five acres in size, with clear water and a good supply of fish for food. They migrate to coastal areas for the winter.



In most states where loons are found, they are at risk of becoming extinct and require management to ensure the health of the population. To help keep track of how many loons are living on specific lakes, state wildlife specialists train volunteer citizen scientists how to monitor loon populations during breeding season. This provides additional data that helps researchers determine loon population trends and factors affecting their survival.

During the breeding season, a pair of loons typically produces one or two chicks per year. The chicks are slow to mature. They are usually seven years old before their first successful breeding season.

Loons have dense bones rather than the hollow bones characteristic of most birds. Their wings are comparatively small for their body size. Adults weigh an average of 8–12 lbs. Another trait of loons is their large, webbed feet and legs set far back on their bodies. To fly, they run on top of the water, and flap their wings to gain enough momentum for liftoff.

The data table below shows the number of adult loons and chicks counted in the southern part of Maine between 1985 and 2020.

**Number of Loon Adults and Chicks
Counted in Southern Maine 1985-2020**

Year	Chicks	Adults
1985	200	1470
1995	260	2650
2010	280	2780
2017	453	2817
2019	372	2820
2020	414	2974

GO RIGHT ON TO THE NEXT PAGE ⇨


Directions (45–46): Using the information given in the data table, construct a line graph on the grid provided, following the directions below.

45 Mark an appropriate scale, without any breaks in the data, on *each* labeled axis. [1]

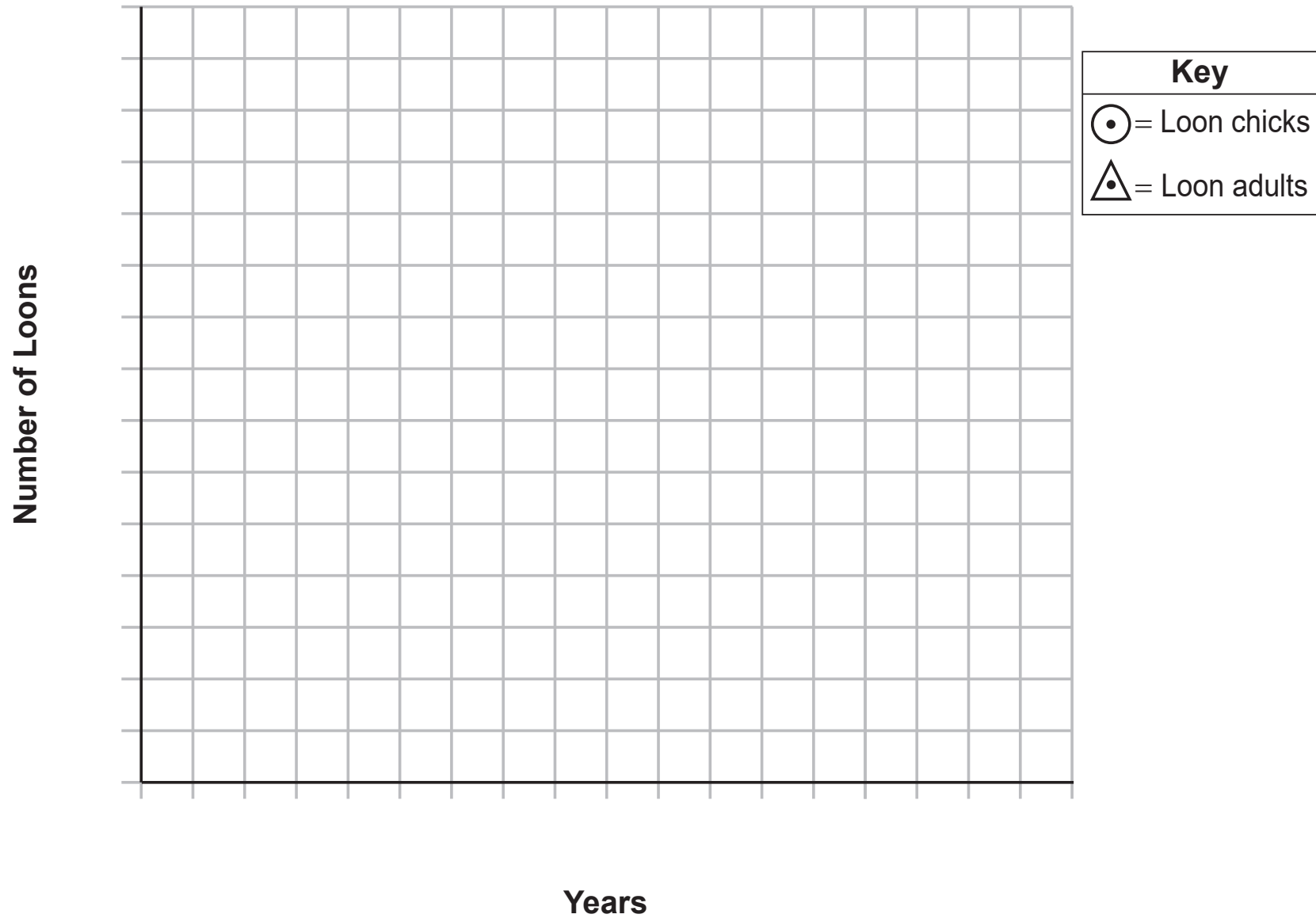
46 Plot the data for both the adults *and* the chicks following the directions below: [1]

- Plot the data for the loon adults on the grid and connect the points. Surround each point for the loon adults with a small triangle.
- Plot the data for the loon chicks on the grid and connect the points. Surround each point for the loon chicks with a small circle.

Example:  (loon adults)

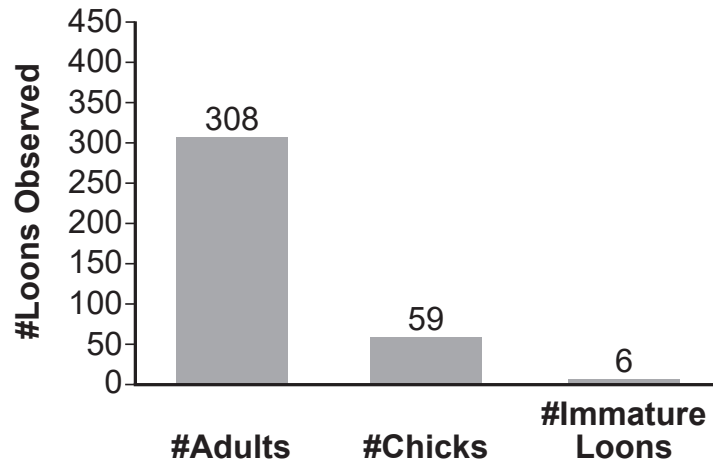
Example:  (loon chicks)

Number of Loon Adults and Chicks Counted in Southern Maine 1985-2020

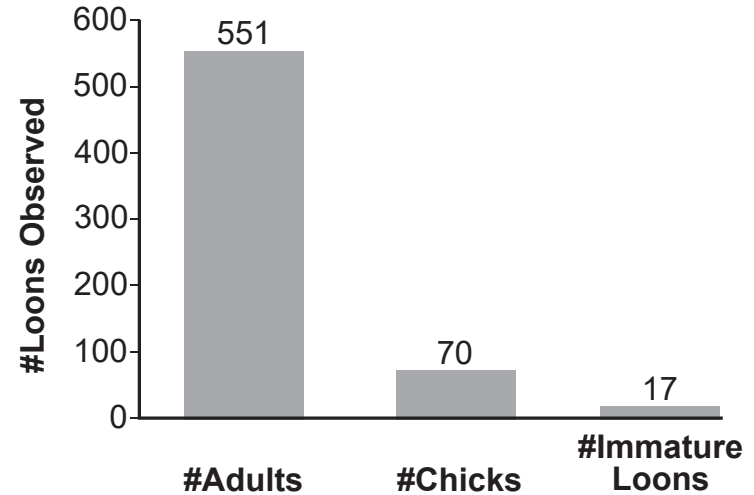


Below are two graphs showing the number of loon adults, immature loons, and chicks observed during the annual loon census conducted by the Audubon Society of New York on the lakes and ponds throughout the Adirondack Park in New York State.

**2001 Annual Loon Census
Number of Adult, Chick, and
Immature Loons Observed**



**2020 Annual Loon Census
Number of Adult, Chick, and
Immature Loons Observed**



Note: The answer to question 47 should be recorded on your separate answer sheet.

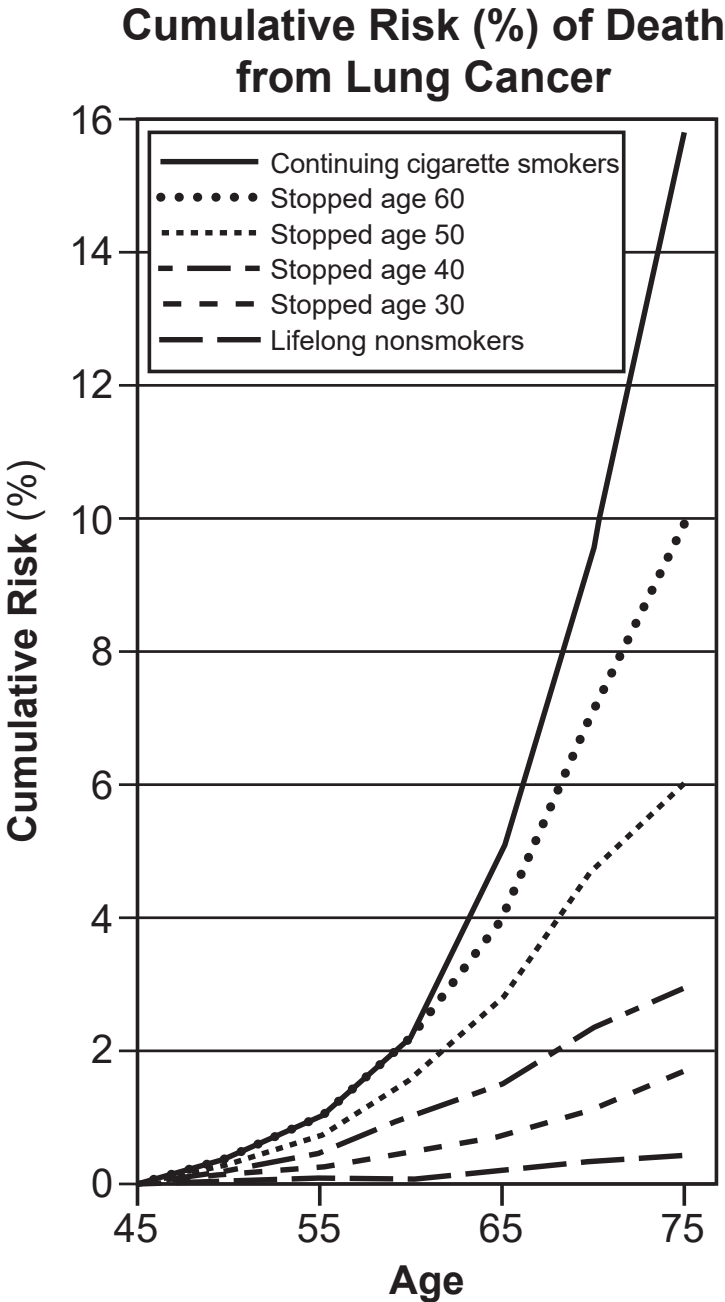
47 The best explanation for why loon populations did *not* show a rapid change in size during the Maine and New York studies is that loons

- (1) produce three or four chicks per year
- (2) take seven years to reach sexual maturity
- (3) live mainly on large lakes
- (4) were counted by volunteers, not wildlife experts

48 Compare the trend in loon population sizes over time represented in the two New York graphs above to the trend observed in the data table for the southern part of Maine. Support your answer with information from the New York graphs and Maine data table. [1]

Base your answer to question 49 on the graph below and on your knowledge of biology.

The graph shows the effects of stopping smoking at different ages along with the cumulative risk (%) of death from lung cancer up to age 75 in men. The study took place in the United Kingdom.



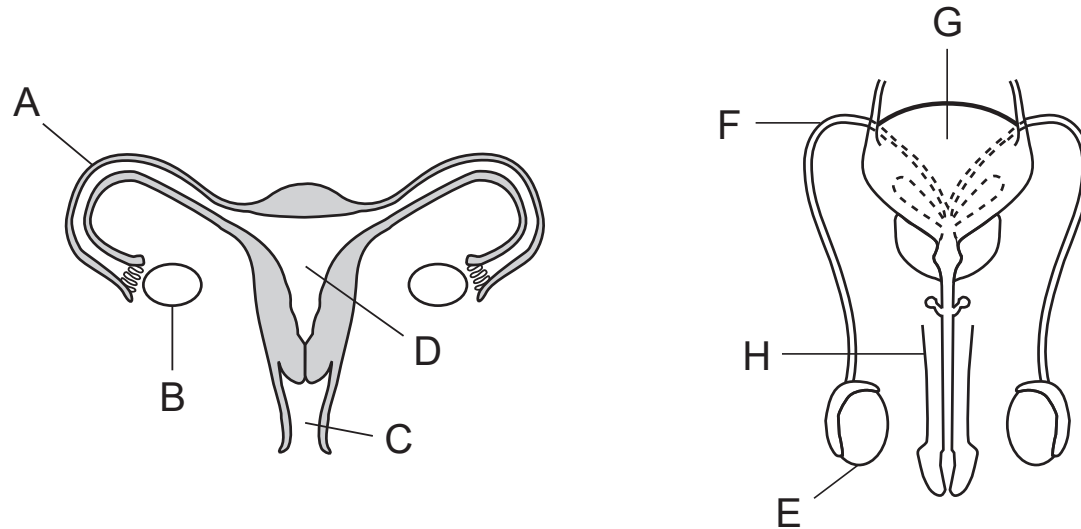
Note: The answer to question 49 should be recorded on your separate answer sheet.

49 Doctors claim that the earlier someone stops smoking, the lower the risk of dying of lung cancer. Which statement best describes evidence that supports this claim?

- (1) Men that smoked 40 cigarettes per day have the same risk as smoking 20 cigarettes per day at any age.
 - (2) Men that continued to smoke had an approximately 16% risk of death, and those that stopped at age 30 had a lower risk.
 - (3) Men that never smoked had the same risk as those that smoked until the age of 30.
 - (4) Men that stop smoking at age 40 have a greater risk of bladder cancer than lung cancer.
-

GO RIGHT ON TO THE NEXT PAGE ⇨

Base your answers to questions 50 and 51 on the diagram below and on your knowledge of biology. The diagram represents the reproductive systems of the human female and male.



Note: The answer to question 50 should be recorded on your separate answer sheet.

50 The two labeled structures that function to produce gametes and hormones are

- (1) *A* and *F*
- (2) *B* and *E*

- (3) *C* and *H*
- (4) *D* and *G*

51 Pelvic inflammatory disease and sexually transmitted infections can lead to a blockage of the structure represented by letter A. Explain how this blockage would interfere with the formation of a zygote. [1]

52 Detritivores are animals that consume and break down dead plant and animal matter from ecosystems. Explain why the decline and extinction of many species of detritivores may have *negative* consequences on the stability of an ecosystem. [1]

Base your answers to questions 53 through 54 on the information and photograph below, on the next page, and on your knowledge of biology.

A research team of students added water and an experimental enzyme to a jar containing a piece of the type of plastic that is commonly used in food packaging. Several days later, the plastic was no longer visible.



Jar with original plastic → Jar several days later

53 Identify *one* factor that would influence the rate at which the experimental enzyme breaks down this type of plastic. [1]

The research team claimed that the experimental enzyme would break down all plastics. The students repeated the experiment with a different type of plastic. This time, the plastic was not broken down by the enzyme.

54 Explain why the enzyme is *not* able to break down all types of plastics. [1]

Base your answer to question 55 on the information below and on your knowledge of biology.

Ultrasonic repellents are electronic devices designed to repel and remove household pests. When plugged in, they produce ultrahigh-frequency sound waves to chase away mice, rats, fleas, cockroaches, silverfish, and spiders. The sound these devices make cannot be heard by humans. These pest-control devices are often used in environments where the use of poison is prohibited or not recommended.

55 Identify *one* concern, other than its effectiveness, that people might have before using it in their home. [1]

Part C

Answer all questions in this part. [17]

Directions (56–72): Record your answers in the spaces provided in this examination booklet.

Base your answers to questions 56 and 57 on the information, photograph, and illustration below and on the next two pages, and on your knowledge of biology.

Mouse DNA and Epigenetics



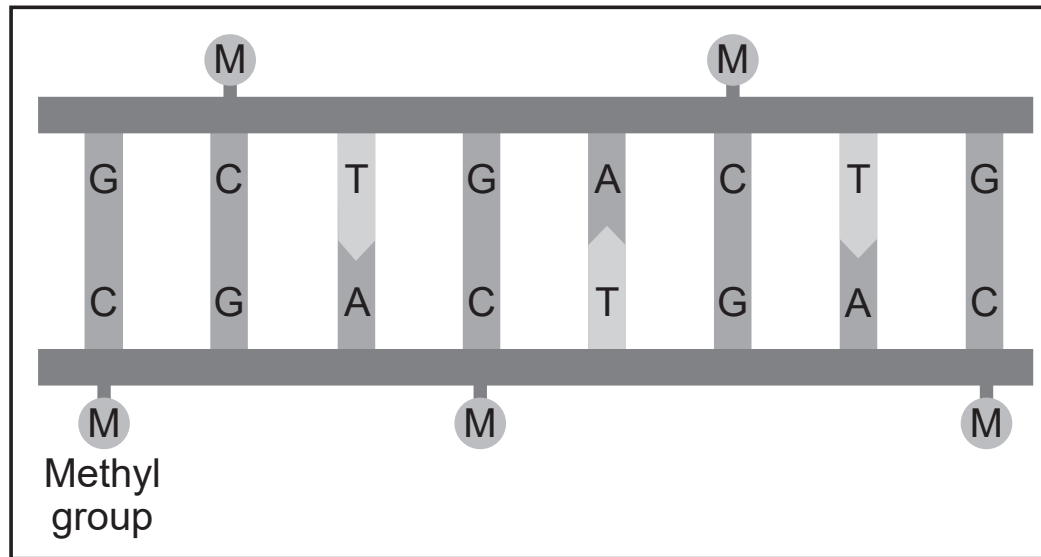
In 2000, scientists at Duke University designed an experiment using mice that carry a gene for yellow fur color. Mice with the yellow fur gene also have a large appetite and a tendency to develop cancer and diabetes. The photo shows a mouse with the yellow fur gene (on the left) next to a normal mouse with the brown fur gene (on the right).

The scientists wanted to see if they could reduce the chances of the offspring of the yellow mice developing these diseases by changing the expression of the gene for yellow fur color.

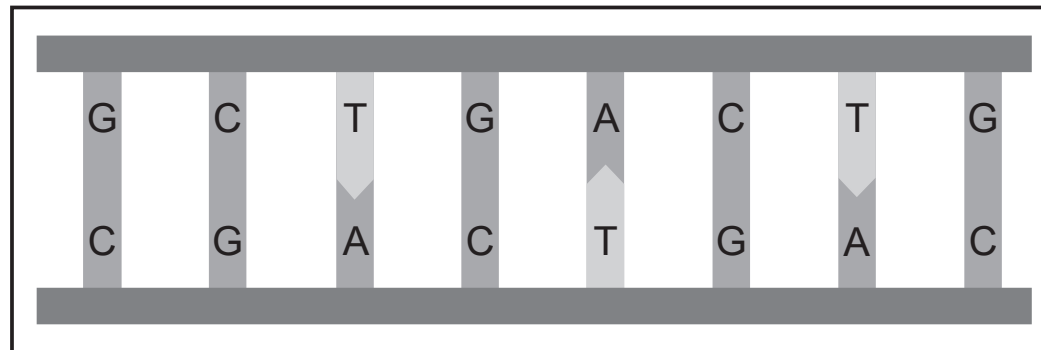
They began by changing the diet of yellow female mice to a diet containing food rich in methyl groups. Methyl groups are small clusters of chemicals that can attach to a gene and turn it off. Their offspring, that had methylated DNA, were found to be thin, have brown fur, and had less chance of developing cancer and diabetes.

The model illustrated below shows methylated and non-methylated DNA.

Methylated DNA



Non-Methylated DNA



GO RIGHT ON TO THE NEXT PAGE ➡

The researchers concluded that the offspring were born with an epigenetic alteration to their DNA. Epigenetic alterations are inheritable changes in gene expression patterns independent of the primary DNA sequence. The expression of the gene is altered but the DNA sequence usually remains unchanged. In addition to diet, other factors such as hormones, physical activity, stress, tobacco, and alcohol use can also cause epigenetic changes.

56 Sometimes identical twins have different physical traits. Using the experiment Duke scientists performed on mice with the yellow fur color gene as a model, explain how epigenetics could be the cause of differences observed in identical twins. [1]

57 Explain why epigenetic changes are *not* usually considered to be mutations. [1]

Base your answer to question 58 on the information below and on your knowledge of biology.

A Scorpion's Secret Weapon Ingredient



Getting stung by a scorpion is painful. The pain serves as a warning to its predators to stay away.

Scorpion venom contains toxins that are recognized by the pain receptors on nerve cells. These receptors are the same as those that cause a burning feeling when you touch something hot. But, being stung by a scorpion is much more painful than touching a hot object.

The venom itself doesn't cause all of the pain. It also contains an acid that changes the pH of the area surrounding the affected nerve cells. The change in pH increases the intensity of the pain message.

58 In a population of scorpions, a mutation occurred that resulted in the venom having no effect on its predators. Explain why the number of predators that feed exclusively on scorpions would *decrease* over time. Justify your answer. [1]

Base your answers to questions 59 through 61 on the information below and on your knowledge of biology.

Scientists have studied the medicinal herb, *Fritillaria delavayi* (fritillary), which is very difficult to cultivate. This herb is used in Chinese traditional medicine to treat lung conditions such as bronchitis and bad coughs. This threatened herb grows wild among the rocks in dry, cold, mountainous places in China. Most fritillary have bright green leaves and sunny yellow flowers. The scientists have noticed something unusual: In places where people often gather and harvest the herb, more and more plants of the same species have a dull brown flower color. Many people have trouble finding this dull brown variety that blends in with the rocky area where it grows.

Fritillary Plant



Normal yellow individuals in areas with low harvesting rates



Dull brown individuals in areas with high harvesting rates

59 Identify the original source of the brown variation. [1]

60 Fritillary grows very slowly, taking five years to reproduce. Predict which flower color will be more common in areas accessible by humans after 20 years. Support your answer. [1]

61 Human efforts to cultivate this endangered species have not been successful. What argument could be made to justify continued efforts to preserve this species by cultivation? [1]

Three different food chains present in a food web are represented below.

(a) prickly pear cactus → antelope squirrel → western diamondback rattlesnake → red-tailed hawk

(b) saguaro cactus → wood rat → western diamondback rattlesnake

(c) brittlebrush → grasshopper mouse

62 Identify the food chain, (a), (b) or (c), in which there would be the *least* amount of energy available to the last consumer in the feeding sequence. Support your answer. [1]

Base your answers to questions 63 and 64 on the information below and on your knowledge of biology.

Woman Gives Birth After Uterus Transplant

Women with uterine factor infertility (UFI) either don't have a uterus or have a uterus that doesn't function. A uterus transplant has emerged as a potential solution for these women. In 2019, the first baby in North America was delivered by a mother who received a uterus transplant.

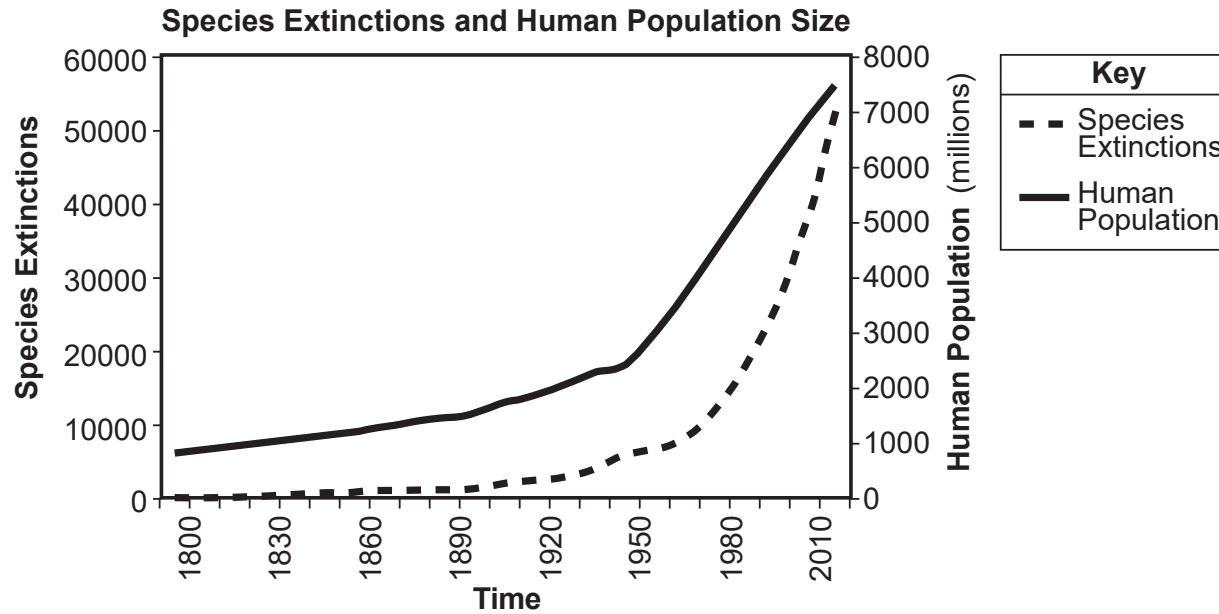
63 Describe a role of the uterus in the process of human reproduction. [1]

During pregnancy, the women are given medication to prevent the transplanted uterus from being rejected. After the baby is born, the transplanted uterus is removed.

64 Explain why a woman's body would reject a transplanted uterus if she does *not* take the medication. [1]

Base your answers to question 65 on the information and graph below and on your knowledge of biology.

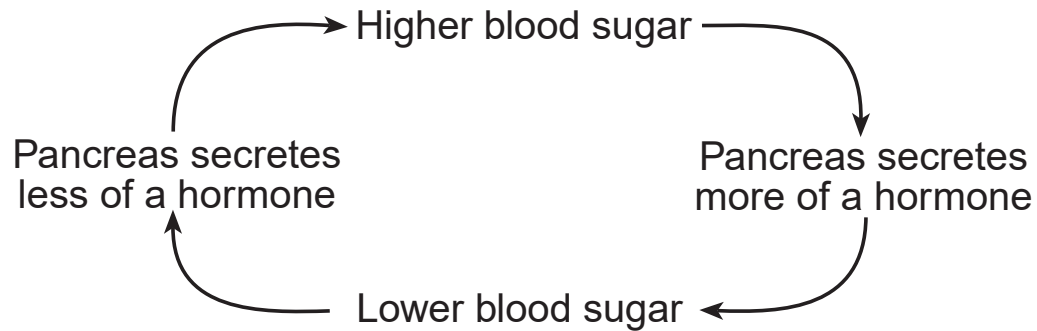
Human actions have affected the biodiversity of multiple ecosystems on Earth.



65 Make a claim as to how human actions have affected biodiversity. Support your claim with evidence from the graph. [1]

Base your answer to question 66 on the diagram below and on your knowledge of biology.

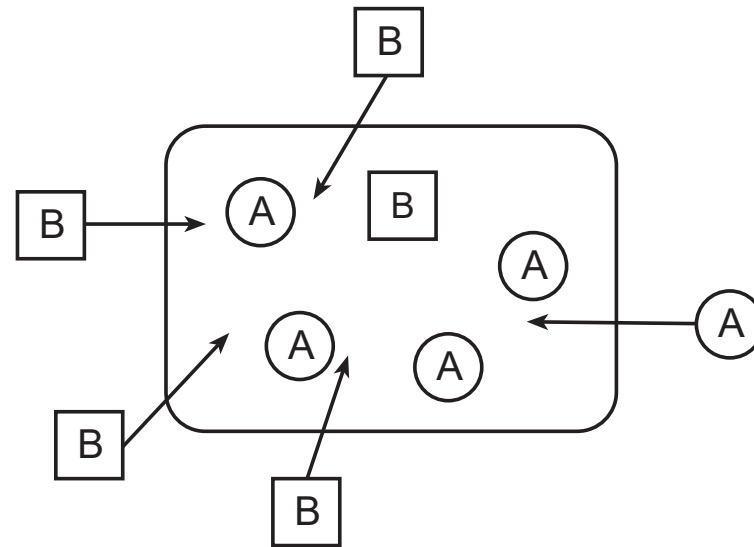
The diagram represents a feedback mechanism in humans.



66 An individual with a healthy pancreas eats a starchy snack. Explain why the pancreas would secrete more hormone a short time later. Support your answer with information from the diagram. [1]

Base your answer to question 67 on the information and diagram below and on your knowledge of biology.

The diagram represents two molecules, *A* and *B*, resulting from the digestion of foods, moving into a cell.

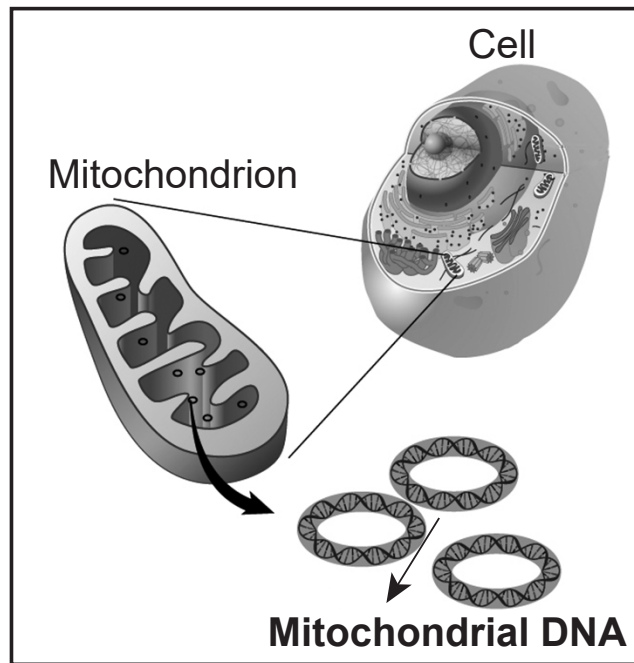


67 Explain how the lack of nutrients can impact the cellular process needed to move molecule *A* into this cell. [1]

Base your answers to questions 68 through 70 on the information below and on your knowledge of biology.

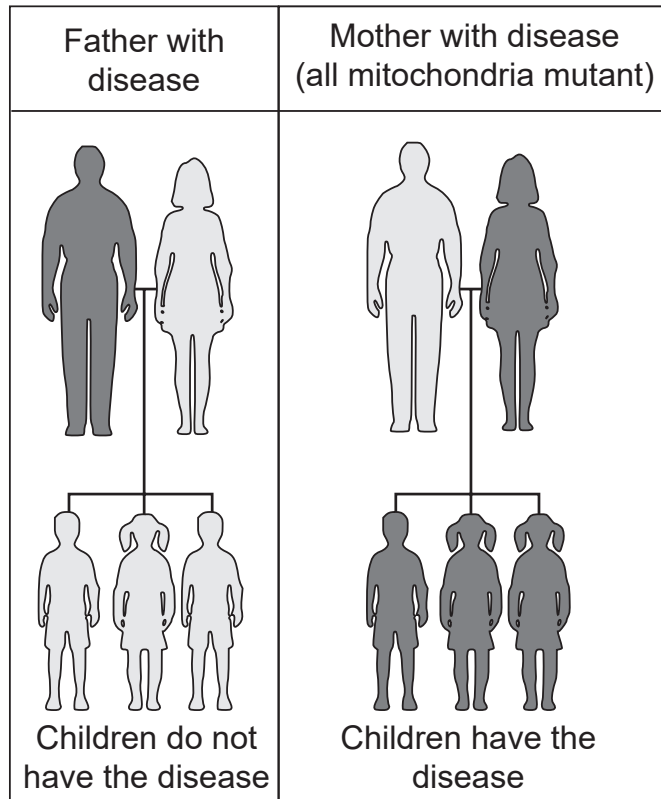
Mitochondria

Mitochondria are organelles present in most complex cells. The diagram below illustrates a typical mitochondrion in cells.



68 Explain why mitochondria are essential to the survival of complex organisms. [1]

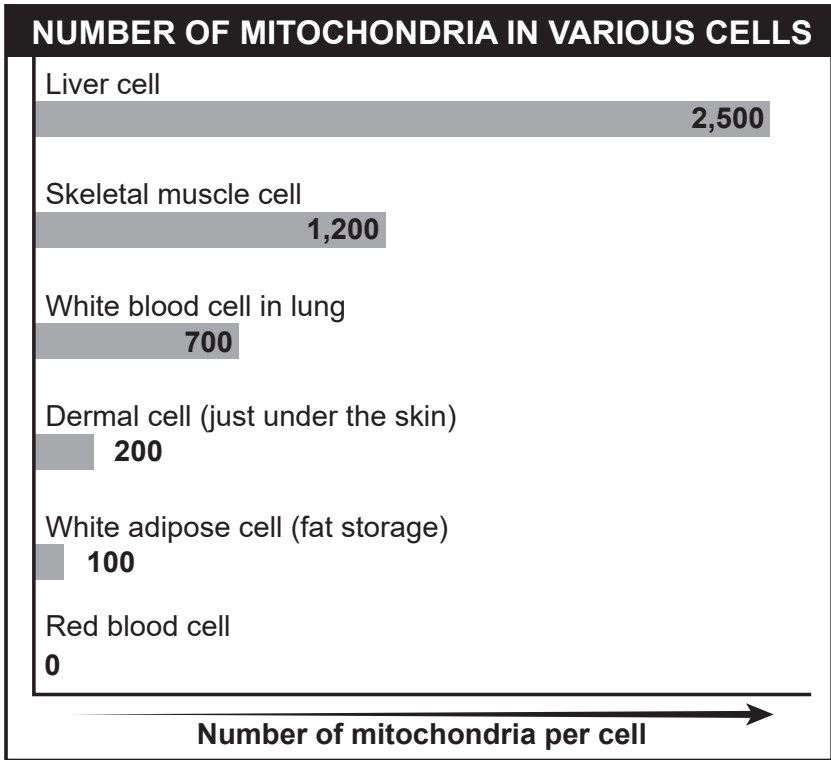
Mitochondrial Inheritance



Unlike most other organelles, mitochondria contain their own DNA. This DNA is in the form of a double-stranded, ring-shaped molecule that can replicate. The number of mitochondria in a cell can increase when mitochondria reproduce.

Mitochondrial DNA mutates. Some of these mutations have been linked to certain diseases in humans. Mitochondrial DNA is passed on to children through their mothers. The chart to the left illustrates this process.

69 Provide evidence from the mitochondrial inheritance chart that supports the claim that mitochondria are usually inherited from the mother. [1]



Different cells in the human body contain different numbers of mitochondria. The chart to the left shows the approximate number of mitochondria present in various cells.

70 State which cell type would probably be most affected by mitochondrial diseases. Support your answer. [1]

Base your answers to questions 71 and 72 on the information below, on the next page, and on your knowledge of biology.

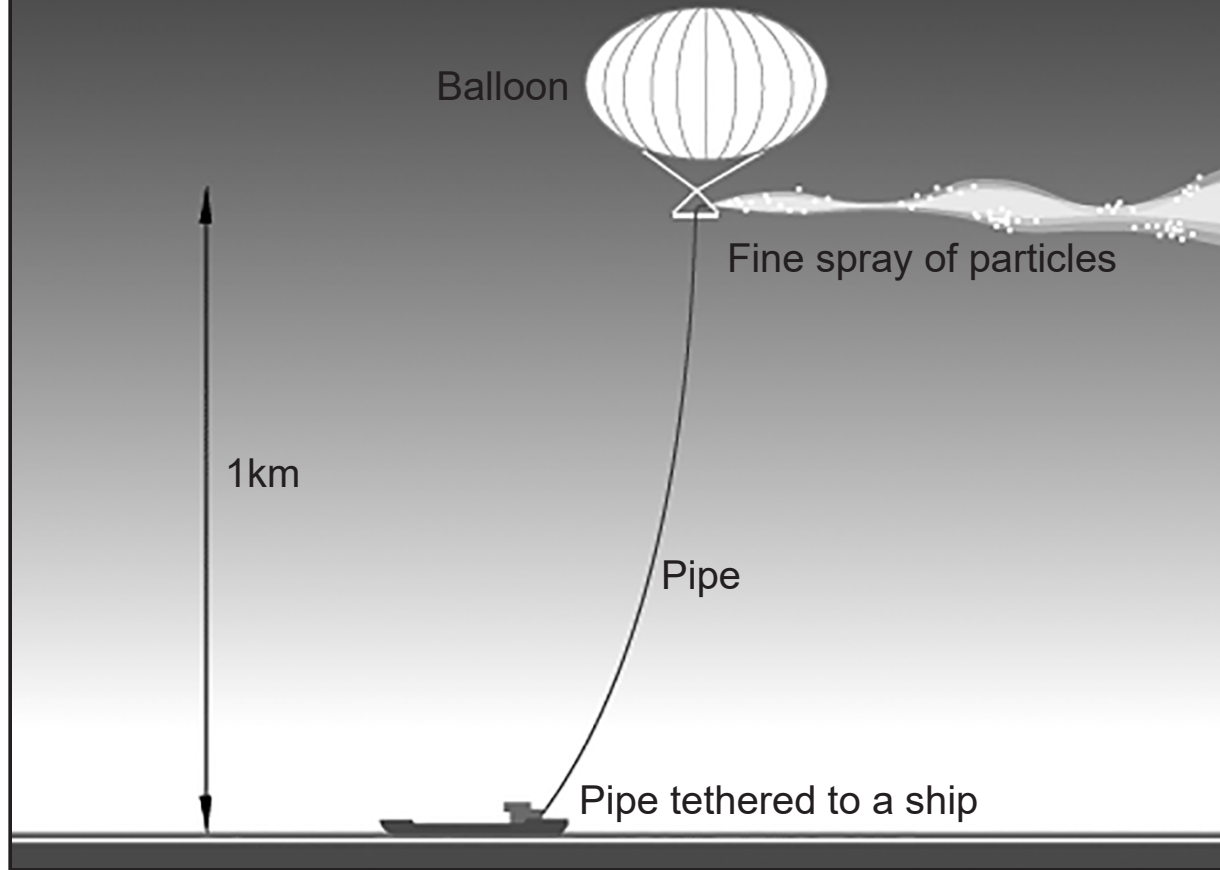
Why Is the Sky White?

One method researchers are investigating to decrease the impact of climate change is stratospheric aerosol scattering. This involves using airplanes or balloons to spray tiny particles of sulfate aerosols or calcium carbonate into the upper atmosphere. The particles reflect sunlight back into space.

Climate modeling has shown that the use of this technology could lead to a decrease in extreme temperatures and the intensity of tropical storms. It could also reduce ice loss and sea-level rise as well.

However, there are risks associated with this technology. While the models show global benefits, local benefits might vary considerably. Also, since this technology doesn't address carbon emissions, as it continues to get warmer there will be a need to spray more and more particles into the atmosphere. This could change the appearance of the sky from blue to white. There are also concerns that introducing sulfate aerosols into the upper atmosphere could damage the ozone layer.

Tethered boom delivery system



GO RIGHT ON TO THE NEXT PAGE ⇨

71 State *one* reason for supporting the use of this technology. [1]

72 Explain why it would be important to continue efforts to reduce carbon emissions even if this technology were to be used. [1]

Part D

Answer all questions in this part. [13]

Directions (73–85): For those questions that are multiple choice, record on the separate answer sheet the *number* of the choice that, of those given, best completes each statement or answers each question. For all other questions in this part, follow the directions given and record your answers in the spaces provided in this examination booklet.

Note: The answer to question 73 should be recorded on your separate answer sheet.

- 73 When the proportion of a gene for a specific trait in a population of finches increases over time, the most likely cause of this increase would be
- | | |
|------------------------|---------------------------|
| (1) selective breeding | (3) natural selection |
| (2) species extinction | (4) ecological succession |

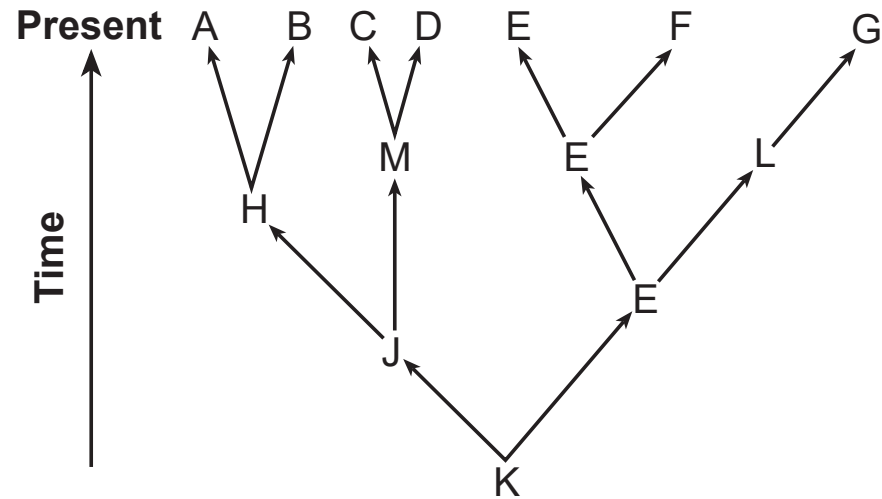
Note: The answer to question 74 should be recorded on your separate answer sheet.

- 74 A scientist conducts an experiment in order to
- | | |
|-----------------------|------------------------|
| (1) choose variables | (3) collect data |
| (2) test a hypothesis | (4) identify a control |

GO RIGHT ON TO THE NEXT PAGE ⇨

Base your answers to questions 75 through 77 on the information and diagram below and on your knowledge of biology.

The diagram represents evolutionary pathways of seven groups of organisms alive today.



Note: The answer to question 75 should be recorded on your separate answer sheet.

75 Which species is most closely related to species *M*?

- (1) *E*
- (2) *F*
- (3) *G*
- (4) *H*

Note: The answer to question 76 should be recorded on your separate answer sheet.

76 Which species appears to have been well adapted to its environment for a long period of time?

(1) *E*

(3) *C*

(2) *F*

(4) *D*

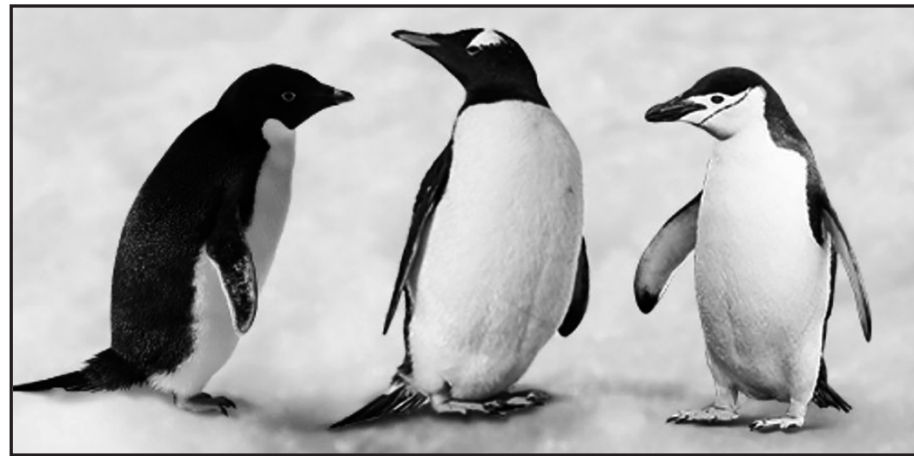
77 The diagram was based on fossil evidence. Explain why other forms of evidence would help support the accuracy of the evolutionary pathways represented in the diagram. [1]

GO RIGHT ON TO THE NEXT PAGE ⇨

78 When determining a pulse rate, why is it best to use the average of three readings? [1]

Base your answer to question 79 on the information below and on your knowledge of biology.

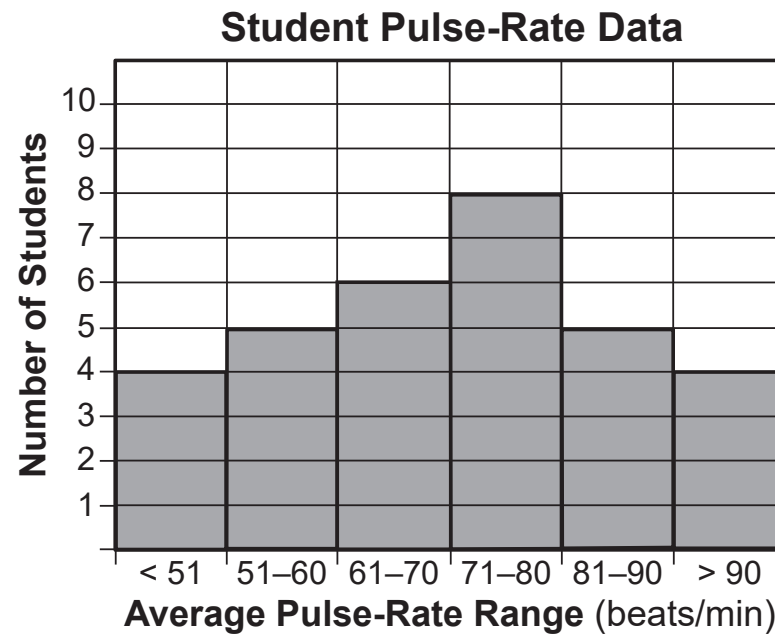
Selecting agents can have a significant impact on the size of many populations living in an area.



79 Identify *one* selecting agent that could have a potential impact on the number of individuals in the various penguin populations living in the Antarctic Peninsula. [1]

Base your answer to question 80 on the information below and on your knowledge of biology.

Pulse-rate data were collected from some students during their study hall. The data are shown in the histogram below.



80 State *one* way the data would most likely be different if the pulse rates were collected immediately after gym class instead of during study hall. [1]

Note: The answer to question 81 should be recorded on your separate answer sheet.

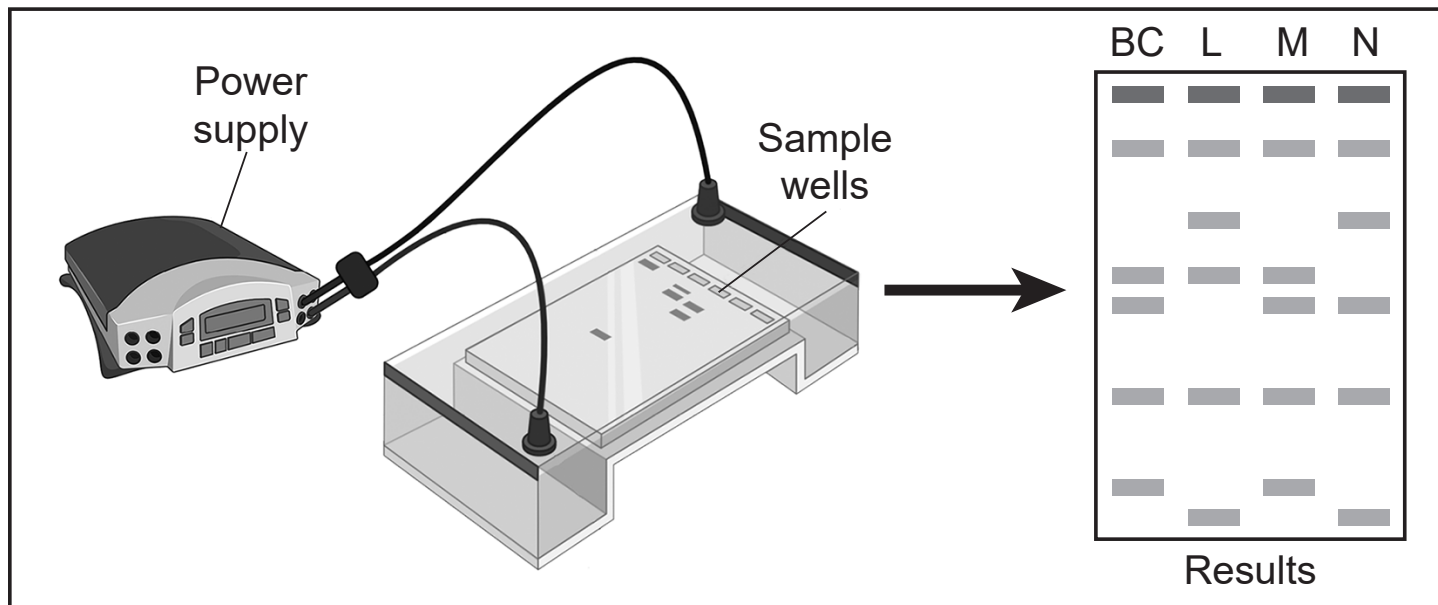
81 Ground finches in the Galapagos Islands are seed eaters. The beaks of the offspring are very close in size to the beaks of their parents. The best explanation for this observation is that

- (1) a bird with a very small beak will die
- (2) the temperature of the environment determines the size of the beak
- (3) only birds with very small beaks are able to reproduce
- (4) the size of the beak is determined mostly by genes

Base your answers to questions 82 and 83 on the information below and on your knowledge of biology.

A student was assigned the task of determining which of three species of plant (species *L*, *M*, or *N*) was most closely related to *Botana curus* (*BC*).

The student compared a segment of genetic material from each species using the procedure represented below.



Note: The answer to question 82 should be recorded on your separate answer sheet.

82 A valid conclusion that can be drawn from these results is that

- (1) genetic material is not useful in determining evolutionary relationships
- (2) species *M* is most closely related to *BC*
- (3) species *L* and *N* are most closely related to *BC*
- (4) *BC* is not related to any of the species

83 Identify another biochemical test that would provide data to support which of the three plant species is most closely related to *Botana curus*. [1]

84 During physical activity, a person's pulse rate changes. Choose *one* body system, other than circulatory, that would be involved in maintaining homeostasis, and describe *one* change that would occur in that system. [1]

85 State *one* reason why it would be possible for a single island to support populations of both small tree finches and sharp-billed ground finches. [1]
